

ELITMART



**Providing the Best
Field of Play for Industrial Athletes**

**Solutions for the
Automotive Industry**



“Back in the day, I coached high school soccer. Although I traded my soccer cleats for work boots a long time ago, I still have a deep respect for the endurance and stamina it takes to run the field and score the winning goal. These days, my field of play is the automotive line... where I spend long periods leading my team of industrial athletes. Day after day, we all struggle to reach our production goals with the aches and strains — not to mention the injuries -- that come with working on concrete. What my team really needs is the right field of play for our line of work. “ – Jim, Lead Lineman

Drive Improvements For The Industrial Athlete In Your Facility.

THE AUTOMOTIVE ARENA

In automotive manufacturing, hard working men and women are sent out to perform at their peak in the competitive arena everyday. The expectations for them are high. They work and train hard. It takes a physical toll. Aches, pains and potential for injury are part of the job. Still, they do it day in and day out to support their team, their family and their life off the clock. These hard working folks have earned the title of Industrial Athlete!

AS COACH, YOU HAVE THE POWER

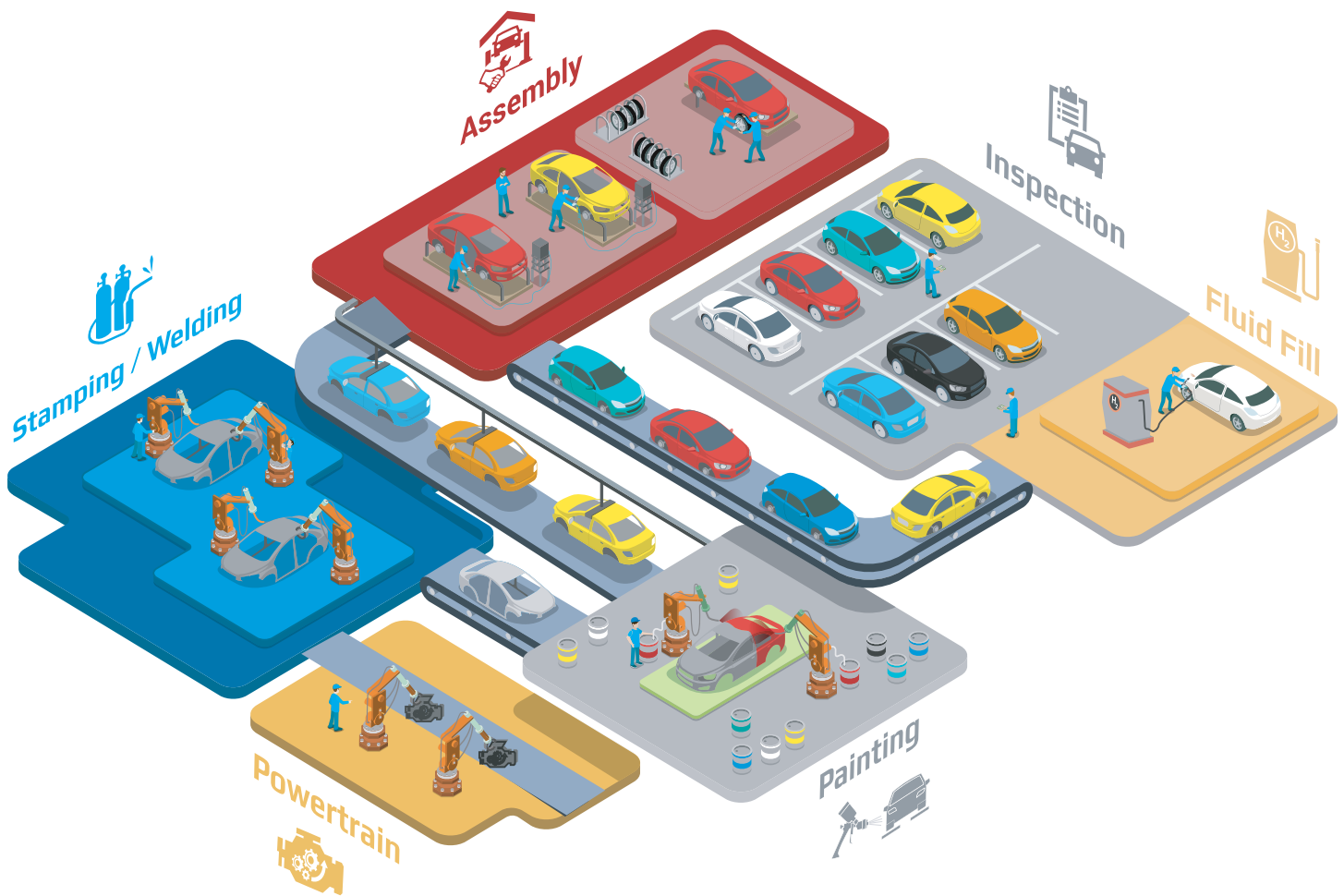
In sports every playing field is different, taking into account the environment and the unique demands of the athlete. All too often, our Industrial Athletes are expected to perform their best on a sub-par field — cold, hard, slick, unforgiving concrete.

You can drive the performance of your team! You do your part with coaching, training, providing safety gear like hats, gloves, glasses. . . whatever they need. It's crushing to do all of that and then see them come off the field defeated or even hurt because of a lousy field. There's a better way. It's proven. The surface matters! Give your Athletes the right field of play for their work area and get more back than you ever imagined!

- More productivity
- Improved safety
- Reduced absenteeism
- Better morale
- Lower costs of injury
- A COMPETITIVE EDGE!

2.2%




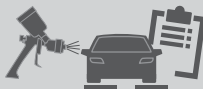

INCREASE IN PRODUCTIVITY AFTER INSTALLATION OF ANTI-FATIGUE MATS



WE KNOW AUTOMOTIVE

Collectively, we've walked hundreds of miles in automotive and OEM plants. We know the challenges that are unique to these facilities and have designed products to meet those challenges head on.

Just as there isn't one vehicle to suit every lifestyle, there's not one flooring product that's right for every environment. With that being said, we recognize that choosing the right product amongst hundreds of possibilities can be overwhelming. That's why we've created this manual. We've broken out the five most common areas of an automotive plant and provided our top product recommendations for each.

 Powertrain	 Stamping / Welding	 Assembly	 Paint / Inspection	 Fluid Fill
Cleaning/Spraying Cutting/Deburring Gluing/Sealing Grinding/Polishing Press Brake Tending	Spot Welding Cutting/Deburring Grinding/Polishing Machine Tending Material Handling	Gluing/Sealing Machine Tending Material Handling Packing Palletizing	Cleaning/Spraying Cast Cleaning Material Handling	Machine Tending Material Handling Pouring Press Brake Tending

CHOOSE THE RIGHT SURFACE^{FOR} OPTIMUM SAFETY^{AND} PERFORMANCE



ERGODECK® FLOORING



ErgoDeck is a modular flooring solution specifically engineered for use in automotive facilities. The patented LockSafe® technology allows the tiles to be connected and reconnected multiple times so you can reconfigure the work area as needed. Available in multiple compounds, ErgoDeck is versatile enough to work in various spaces throughout your facility.

- Exceptional support in wet or dry applications
- Customizable in 3" increments to fit any area
- Patented positive Interlock System prevents separation
- Easily replace single tiles or sections to reduce costs
- Available in Solid and Drainage
- Overall thickness 7/8" (22 mm)
- 100% silicone-free PVC tiles

ERGODECK® GENERAL PURPOSE

GP is best suited for areas with heavy foot and light cart traffic. The softer compound compresses underfoot, delivering greater anti-fatigue benefit. The box-spring structure provides the support needed for rolling carts. Choose **Open (#564)** or **Solid (#566)**. GRITSHIELD™ can be added for additional traction.



GP Open (#564)

ERGODECK® COMFORT

The optimum defense for fatigue in work areas where there is a lot of foot traffic. The spring only underside compresses and rebounds underfoot for a "rubber-like" feel. Comfort is best suited for relatively dry to light over-spray work areas. Choose **Solid (#556)**, or **Open (#558)**.



Comfort Solid (#558)

ERGODECK® HEAVY DUTY

HD is the best choice in areas with heavy cart and foot traffic. The firmer compound lets carts roll over the tiles with ease. Meanwhile, the underside box-spring design provides structural support and impact absorption for health and productivity, even in multi-shift operations. It can be used on catwalks and over grated surfaces. Choose **Open (#560)** or **Solid (#562)**.



HD Solid (#562)

ERGODECK® WITH INTEGRATED OR NO-SLIP CLEATS

The cleated design delivers a sure-footed work surface for maximum productivity, performance and safety in the most demanding workplace conditions. Cleated products are engineered to outlast and outperform traditional gritted products and they can withstand power washing, scrubbing and aggressive cleaning. It is available in Integrated **Solid (#552)**, Integrated **Open (#553)**, **Steel No-Slip Cleats Solid (#554)** and **Steel No-Slip Cleats Open (#555)**.



Integrated Cleat (#552)

In The Know

ERGODECK® INTEGRATED NO-SLIP CLEATS FILLS A TRUE NEED IN THE MARKET... AN AFFORDABLE PRODUCT WITH LONG-LASTING SLIP RESISTANCE.

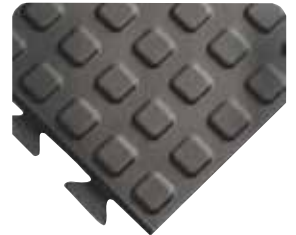


POWERTRAIN - Tolerances are tight and focus is critical in machining operations. The last thing that should be top of mind is what is or isn't underfoot. Industrial Athletes in these areas need products that fight fatigue while providing good traction and chemical resistance.

REJUVENATOR® FLOORING



Step up your team's game plan with Rejuvenator – a tough-skinned, ergonomic flooring surface that helps your team stand stronger. Its super-resilient urethane foam delivers a slight spring in every step to reduce stress on your team's legs, feet and lower backs while the thick outer skin guards against wear. Available in **squared (#502)** or **domed (#503)** designs, Rejuvenator® Flooring features large, 3' x 3' (91cm x 91cm) and 1' x 3' (30cm x 91cm) tiles. The hidden interlock on all four sides creates a seamless surface that can't be kicked apart. Finish off with beveled ramps in yellow or black, Rejuvenator® Flooring is above all other urethane "wannabes."



24/SEVEN® MATS

24/Seven is a collection of high performance, 3'x3' (91 x 91 cm), interconnecting rubber anti-fatigue mats. These resilient modular mats are tough enough to handle 24/7 shift operations, but supple enough to provide cushioned support where it's needed. Because of its modularity, 24/Seven can be positioned to cover large flooring areas, single workstations and assembly lines. The three different compounds provide resistance against grease (**#570GR -576GR**), cutting fluid (**#570CFR-576CFR**), and petroleum-based fluids (**#570NBR-576NBR**). Choose from a solid for drier areas or an open variation to maximize drainage in wet workspaces. GRITSHIELD™ can also be added to increase traction.



GRATEDECK

GrateDeck (**#425**) is a two-fold solution, specially designed for upper level grids, scaffolding or catwalks. One side has a superior chemical resistant PVC surface and the other has a unique corrugated design, perfect to prevent abrasion of the anti-fatigue sponge sandwiched between. The interlocking puzzle design offers the flexibility to cover just about any grated surface. Also available without the protective corrugated underside, look up **Ergo-Max (#426)** on www.Wearwell.com.



DIAMOND-PLATE SPONGECOTE®



No. 1 in customer satisfaction for over 25 years, this nitrile rubber-enhanced Nitricell® sponge is the industry standard. It absorbs repeated compression and bounces back to its original form better than any PVC sponge alternative. Available in **15/16" (24mm) thick (#414)** and **9/16" (14mm) thick (#415)**. Add GRITSHIELD™ for additional traction.



\$360,000

**REDUCTIONS OF ACCIDENT CLAIMS TRACED
TO ANTI-FATIGUE FLOORING AND MATTING
INSTALLATION.**

REDUCE FATIGUE AND IMPROVE ATTENDANCE



Stamping and Welding

Forming and fab'ing metal is no easy task. Flooring in these departments needs to withstand the carts and vehicles required to move large parts around, while still providing a slip-free, fatigue fighting platform for your industrial athletes.

ERGODECK® HEAVY DUTY



HD is the best choice in areas with heavy cart and foot traffic. The firmer compound lets carts roll over the tiles with ease. Meanwhile, the underside box-spring design provides structural support and impact absorption for health and productivity, even in multi-shift operations. It can be used on catwalks and over grated surfaces. Choose **Open (#560)** or **Solid (#562)**.



REJUVENATOR® FLOORING



Step up your team's game plan with Rejuvenator – a tough-skinned, ergonomic flooring surface that helps your team stand stronger, longer. Its super-resilient urethane foam delivers a slight spring in every step to reduce stress on your team's legs, feet and lower backs while the thick outer skin guards against wear. Available in **squared (#502)** or **domed (#503) designs**, Rejuvenator® Flooring features large, 3' x 3' (91cm x 91cm) and 1' x 3' (30cm x 91cm) tiles. The hidden interlock on all four sides creates a seamless surface that can't be kicked apart. Finish off with beveled ramps in yellow or black, Rejuvenator® Flooring is above all other urethane "wannabes."



WELDSAFE® MATS

WeldSafe® (#447) has a specially formulated rubber surface that repels sparks and hot metal shards. With a melting point of over 500° Fahrenheit, the surface is perfect for welding workstations. Available in 7/8" (22mm) and 9/16" (14mm) thicknesses, WeldSafe® mats are backed with a nitrile-enhanced Nitricell® sponge base that absorbs repeated compression and bounces back to its original form better than any PVC sponge alternative. Accept no substitutes in your critical welding applications!



3.7

AVERAGE NUMBER OF MISSED WORK DAYS DUE TO OCCUPATIONAL INJURIES

QUALITY WORK STARTS WITH ENHANCED VISIBILITY



Paint and Inspection

A smooth, flawless finish is critical to an auto consumer's first impression. A keen eye, high standards and the right environment are crucial to athletes in these departments. Matting and flooring not only helps workers fight fatigue, they help maximize the light in critical inspection areas.

ERGODECK® GENERAL PURPOSE



Our most popular product in Automotive facilities, ErgoDeck is also available in white. Use it in areas where you need to maximize the light such as paint and inspection. ErgoDeck® GP compresses underfoot, delivering excellent anti-fatigue benefit. Choose **open (#564)** which allows for ventilation and drainage or **solid (#566)**. 100% Silicone free.



SOFT ROCK

Soft Rock (#423) has a rubber-enhanced sponge base that inhibits the growth of organic contaminants. Easy to clean, it is a modern choice where for workers who stand on hard tiles and concrete. Available in a variety of colors (**Coal, Bluestone, Slate, Travertine, Granite or Sandstone**) with lengths from 3' to 75' (.91m to 23m).



TILE-TOP™ MATS

Tile-top is the top choice for environments with strict contamination control. The anti-microbial rubber composite sponge offers maximum comfort and resilience, while delivering abrasion and chemical resistance. The smooth surface cleans easily, to limit debris build up. Available in a variety of colors (**Black, Blue, Charcoal, Gray**) two thicknesses **7/8" (22mm) (#419)** and **1/2" (13mm) (#420)**.



LIGHTWORKS INSPECTION MAT

LightWorks Inspection Mat (#438) is designed to enhance visibility in quality control areas. The highly reflective white surface maximizes available light so imperfections don't go unnoticed during inspection. The clean aesthetic makes it a good choice for non-industrial environments, or for poorly lit areas where available light needs to be maximized.



\$42,152

AVERAGE COST OF A SINGLE FLOOR RELATED INJURY

YOUR BEST_{DEFENSE} AGAINST ACHES & PAINS



Assembly

These are areas in motion! With every new car model, the assembly line has to be able to adapt and “go with the flow”. Typically such motion requires extraordinarily long runs of matting or full “wall to wall” installations to mirror the dynamic work-flow of the athletes. Wearwell will partner with you to deliver products that meet your line’s demands.

ERGODECK® SMOOTH

ErgoDeck Smooth™ (#568) is a high performance anti-fatigue surface ideal for pivoting, rolling, stopping and starting movements. Each tile features our patented LockSafe® Positive Interlocking System™ and, a firm, lightly textured surface that provides good traction. Optional ramps provide easy on-off access.



REJUVENATOR® FLOORING



Step up your team’s game plan with Rejuvenator – a tough-skinned, ergonomic flooring surface that helps your team stand stronger, longer. Its super-resilient urethane foam delivers a slight spring in every step to reduce stress on your team’s legs, feet and lower backs while the thick outer skin guards against wear. Available in **squared (#502)** or **domed (#503)** designs, Rejuvenator® Flooring features large, 3’ x 3’ (91cm x 91cm) and 1’ x 3’ (30cm x 91cm) tiles. The hidden interlock on all four sides creates a seamless surface that is stable and the tiles can’t be kicked apart. Finished off with beveled ramps in yellow or black, Rejuvenator® Flooring is above all other urethane “wannabes.”



DIAMOND-PLATE SPONGECOTE® MATS



No. 1 in customer satisfaction for over 25 years, this nitrile rubber-enhanced Nitrecell® sponge is the industry standard. It absorbs repeated compression and bounces back to its original form better than any PVC sponge alternative. Available in **15/16” (24mm) thick (#414)** and **9/16” (14mm) thick (#415)**. Add GRITSHIELD™ for additional traction.



\$11.9

BILLION – THE COST OF FALLS NATIONALLY

WET^{TO} DRY ENVIRONMENTS SLIP PROTECTION



Fluid Fill

Ideally, every drop goes into the vehicle. But, in reality, every now and then there is a drip or spill. These chemicals can wreak havoc on the wrong materials. Matting in these areas needs to be able to withstand fluids, stay put and provide a long-lasting ergonomic surface.

ERGODECK® WITH INTEGRATED NO-SLIP CLEATS

The cleated design delivers a sure-footed work surface for maximum productivity, performance and safety in the most demanding workplace conditions. Cleated products are engineered to outlast and outperform traditional gritted products and they can withstand power washing, scrubbing and aggressive cleaning. It is available in Integrated Closed (#552), Integrated Open (#553).



24/SEVEN® MATS

24/Seven is a collection of high performance, 3'x3' (91 x 91 cm), interconnecting rubber anti-fatigue mats. These resilient modular mats are tough enough to handle 24/7 shift operations, but supple enough to provide cushioned support where it's needed. Because of its modularity, 24/Seven can be positioned to cover large flooring areas, single workstations and assembly lines. The three different compounds provide resistance against **grease (#570GR -576GR)**, **cutting fluid (#570CFR-576CFR)**, and **petroleum-based fluids (#570NBR-576NBR)**. Choose from a solid for drier areas or an open variation to maximize drainage in wet workspaces. GRITSHIELD™ can also be added to increase traction.



WORKSAFE® MATS

Time tested and worker approved, the **Worksafe® (#477)** mat is robust, resilient and tough. The specially formulated compound is resistant to a number of fluids that it might come in contact with. Worksafe® mats are the gentle giants of rubber mats.

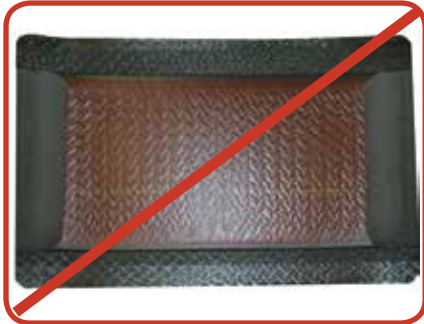


65%

OF LOST WORKDAYS ARE ATTRIBUTED TO SPRAINS OR STRAINS

THE RIGHT CHOICE

WE OFFER MORE



20% MORE STANDING AREA

We are the original diamond-plate innovators. Our unique manufacturing process delivers 20% more standing area.

PATENTED INTERLOCK

Our patented interlock design prevents separation, until you're ready to move for cleaning or replace a tile. There is no other tile in the industry that can compare to the quality and innovation of ErgoDeck® Flooring



CUSTOMIZATION

Wearwell understands every process is different. We have unique solutions including modular, interlocking,



reconfigurable tiles that can create a floor above a floor, or tried and true anti-fatigue mat solutions for workstations and assembly lines. We can customize a solution for any space, environment or safety measurement. We are truly the partner you want on your team.

QUALITY ASSURANCE

We stand behind the quality of all our products, and we offer a Limited-Lifetime Warranty, on some of our most popular. Visit www.Wearwell.com for all of details.



"We have a moral, as well as legal, responsibility to send our employees home at the end of the workday in a condition no worse than when they come in that morning"
***- Ed G. Mohr, C.S.P. Coordinator, Ergonomics and Safety Engineering,
General Motors Corporation, Auburn Hills, MI***

THE GAME PLAN

SAFETY: FALLS, SLIPS, OR TRIPS

CHOOSE THE ARENA



DEFINE THE PLAYING FIELD



HELP YOUR ATHLETES DEFEAT THE CHALLENGES OF CONCRETE



**COLD /
HARD**



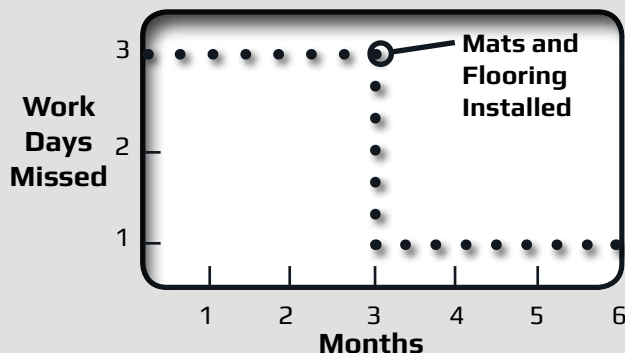
**UN-
FORGIVING**



SLIPPERY

COST SAVINGS RELATED TO THE INSTALLATION OF ANTI-FATIGUE MATS

Fewer missed work days means more productivity and a healthier team!



Reducing just 1 floor related injury a year with matting saves you \$42K a year. That savings grows over time!"



Productivity

\$300,000

+2.2%



Insurance Premium Savings

\$60,000

+\$

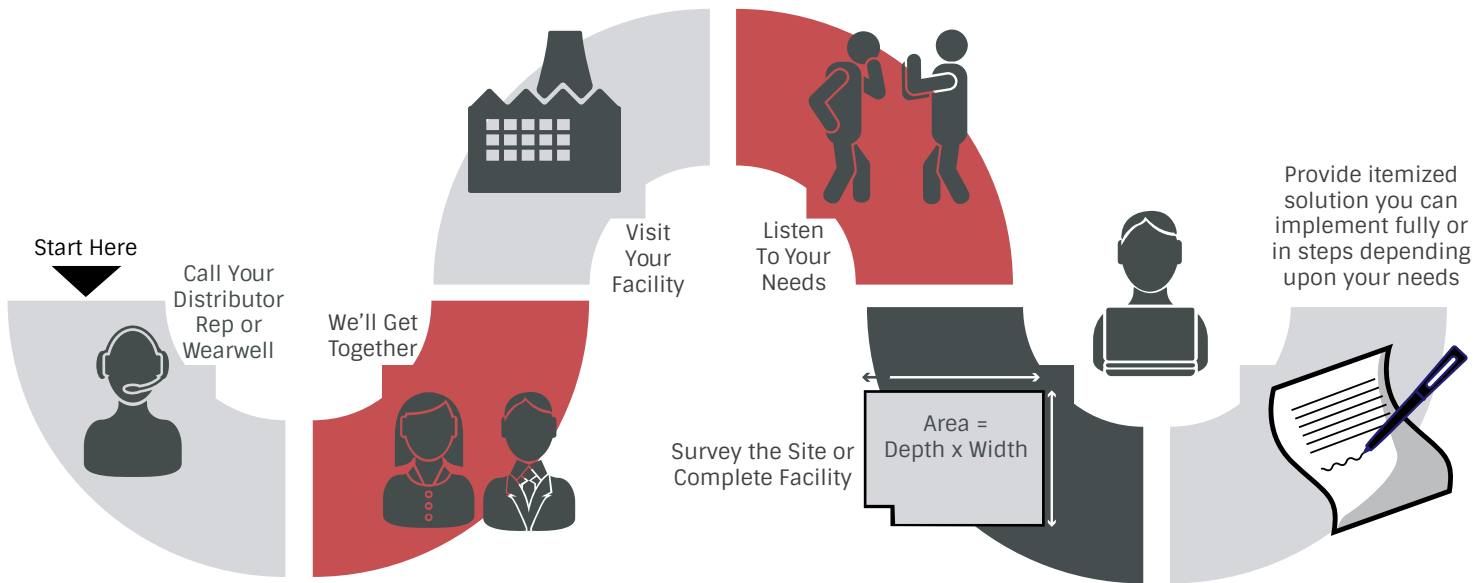


Possible Cost Savings

\$360,000

ROI

SIMPLE GAME-WINNING STRATEGY



Even the best coaches are faced with challenges. You don't have to go it alone! Tackle them with one of our global team of experts. Using state of the art tools, they'll come to your facility, assess your areas of concern and create a game plan specific to your goals, initiatives and budget.

The Wearwell Site-Survey is Free of Charge

This service is valued at \$2,000, but we provide it at no charge with confidence we will earn your business.

Backed by 65 Years of Expertise

You could purchase competitor products, but we are confident you won't find any that can compare to the quality and value of a **Wearwell product**.

We are the industry experts

Your Team, Your Plan

You can prioritize based on your time-line and budget.

Work with Your Current Distributors

With our large network of top notch distributors, purchasing Wearwell flooring and matting is simple and convenient.



ELITMAT



Elitmat GmbH
Julius Tandler Platz 6/15
Wien
Österreich
+43 664 5205591
info@elitmat.at

www.elitmat.at



Elitmat s.r.o.
Beckovská 32
Nové Mesto nad Váhom
Slovenská republika
+421 917 979772
info@elitmat.sk

www.elitmat.sk



Elitmat Czech s.r.o.
Chodovská 228/3
Praha
Česká republika
+420 773 931555
info@elitmat.cz

www.elitmat.cz